

Machines in Motion, Inc. 877 733-5500
Sales, Service, Control use training
Factory direct sales for all Atrump Products

CNC Machining Center: AL42

Starting at only \$71,995.00 FOB CA

Specification



**Atrump Proven High Quality
Machines and Promoting
Centroid Control since 1989**

TABLE	47.2" x 23.6" (1200mm x 600mm)
X TRAVEL	41.3" (1050mm)
Y TRAVEL	23.6" (600mm)
Z TRAVEL	24" (610mm)
SPINDLE NOSE TO TABLETOP	4.7" to 28.7" (120- 730mm)
SPINDLE CENTER TO COLUMN	27.5" (700mm)
TABLE LOAD CAPACITY	1320 LBS (600KGS)
T-SLOT (5)	0.7" x 3.9"
SPINDLE TAPER	CAT40/BT40
PROGRAMABLE SPINDLE SPEED	8000rpm/10000rpm/12000rpm
TRANSMISSION SPINDLE-MOTOR	Belt / Direct drive (OPT)
RAPID FEED RATE X/Y/Z	1000/1000/800 ipm
CUTTING FEED RATE	1 to 393 IPM
SPINDLE MOTOR/MAX POWER	10HP (Optional: 15HP)
SERVO MOTORS ON XYZ	1.8 kW / 1.8 kW / 3 kW
COOLANT PUMP	2 HP
TOOL MAGAZINE CAPACITY	Armless 16 tools
MAX. TOOL DIA	Ø 3.1"
ADJ. POCKET EMPTY	Ø 3.54"
MAX. TOOL LENGTH	11.8" (300mm)
MAX. TOOL WEIGHT	15.4lbs Total:176lbs
LUBRICATION PUMP	Auto lubrication
NET WEIGHT	14,322 LBS. (6510KGS)
POWER REQUIREMENT	17 KVA 3 phase 208V-230V
AIR REQUIREMENT	70-100 psi (5~8 kg/cm^2)
OIL WAY RECOMMENDED	Mobil Vectra #2
OPTIONAL CHILLER OIL	Shell Tellus 32
COOLANT CAPACITY	75.2 Gallons

Featuring:

Centroid's Easy Conversational Programing

Huge 15" Color Touch Screen

60GB Reliable SSD, RS232 and 2USB ports for easy data X-fer.

High precision liner Guide Way on three axes.

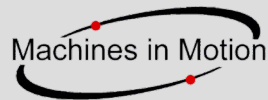
C2 Class Ball Screw is pre-loaded to reduce the effects of heat deformation.

FC30 Meehanite casting with annealed & stress relieved for long term reliability

100% Laser tested and calibrated positioning accuracy and repeatability.

High speed Delta AC motors and Drivers and Spindle inverter.





Machines in Motion, Inc. 877 733-5500
Sales, Service, Control use training
Factory direct sales for all Atrump Products

CNC Machining Center: AL42

Machine Standard

Auto lube system	Coolant system	Shop floor programming/Conversational
Full enclosure	Flood wash system	16 Tools umbrella type ATC
15" color LCD	60 GB solid state hard drive	2 x LED work light
Screw type Chip Auger	Spindle Chiller	Telescoping way cover
USB 2.0 port	RS-232 interface	Leveling bolts & plate
Tools & box	Parts manual machine	Electronic Operation Manual Centroid

Machine Options

**Are Recommended items*

*EHDW-BE6S-IM	100 Step MPG – Operators hand control box	\$395
*AL-SP15HP	Upgrade to 15HP Spindle motor (8000rpm)	\$1,535
*AL-A24ATC	Upgrade to Arm type 24 tools ATC.	\$2,586
AL-A30ATC	Upgrade to Arm type 30 tools ATC.	\$4,900
AL-SPCR	Spindle chiller	\$2,000
AL-SP10K	Upgrade to 10000rpm belt Spindle with Spindle Oil Chiller	\$2,925
AL-SP12K	Upgrade to 12000rpm belt Spindle with Spindle Oil Chiller	\$5,895
AL-SP15HP1	Upgrade to 15HP Spindle motor (10000rpm)	\$4,460
AL-CTS20	20 bar CTS system (For belt driver system/TPRK3T33-33)	\$6,700
AL-CC	Upgrade to Chain type Chip Conveyor (AL32/AL42)	\$3,600
AL-OS	Oil Skimmer	\$995
AL-RL	Upgrade linear guide way to Roller type for X/Y/Z axes	\$3,900
AL-EC	Electric Cabinet conditioner	\$1,995
AL-CG	Coolant gun	\$499
AL-IDS	Interlock door switch	\$385
CP-MIST	Mist Coolant System	\$760



Spindle Chiller



24/30 Tools Arm type ATC



Coolant Through Spindle



Chain Type Chip Conveyor

Tools Options

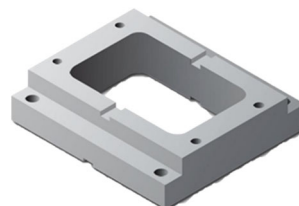
CAT40 KIT RECOMMEND		
CK-105	52pcs Clamping Kit	\$280
CAT40- TOOL16	CAT40 EM Tool Holder + Keyless Chuck + Retention knob (*16 pcs.) EM 1/8, 1/4, 3/8, 1/2, 5/8, 3/4, 1"+C40RK-45(x8) +INT-13-CAT40 (x1)	\$800
HAV-6	6" Angle Vise W/ Swivel Base (Made in Taiwan)	\$530
Total Special kit price		\$1610 \$1530



Machines in Motion, Inc. 877 733-5500
Sales, Service, Control use training
Factory direct sales for all Atrump Products

CNC Machining Center: AL42

Optional Rotary Table

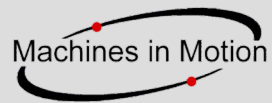


MNC-130R	CNC rotary table w/-Delta motor and driver 1KW. (Table size: 5.1")	\$7,800
DTS-130	Manual tailstock for MNC-130R	\$690
SK6 + AP1	3-Jaw manual scroll chuck w/-backplate	\$990
MNC-130RP	MNC130R 4th axis Rotary Table Package -MNC-130R+DTS-130+SK6+AP1	\$9,300
MNC-172R	CNC rotary table w/-Delta motor and driver 1KW. (Table size: 6.69")	\$8,400
DTS-171	Manual tailstock for MNC-171R	\$885
SK6 + AP1	3-Jaw manual scroll chuck w/-backplate	\$1,125
MNC-172RP	MNC170R 4th axis Rotary Table Package -MNC-172R+DTS-171+SK6+AP1	\$9,950
MNC-200R	CNC rotary table w/-Delta motor and driver 1KW. (Table size: 7.87")	\$8,800
DTS-200	Manual tailstock for MNC-200R	\$950
SK7 + AP1	3-Jaw manual scroll chuck w/-backplate	\$1,250
MNC-200RP	MNC200R 4th axis Rotary Table Package -MNC-200R+DTS-200+SK7+AP1	\$10,500
MNC-251R	CNC rotary table w/-Delta motor and driver 1KW. (Table size: 9.84")	\$9,750
DTS-251	Manual tailstock for MNC-251R	\$1,050
SK8 + AP2	3-Jaw manual scroll chuck w/-backplate	\$1,380
MNC-251RP	MNC251R 4th axis Rotary Table Package -MNC-251R+DTS-251+SK8+AP1	\$11,600

*A Riser Block is available for all rotary tables and tail stock packages.

CENTROID Software Options

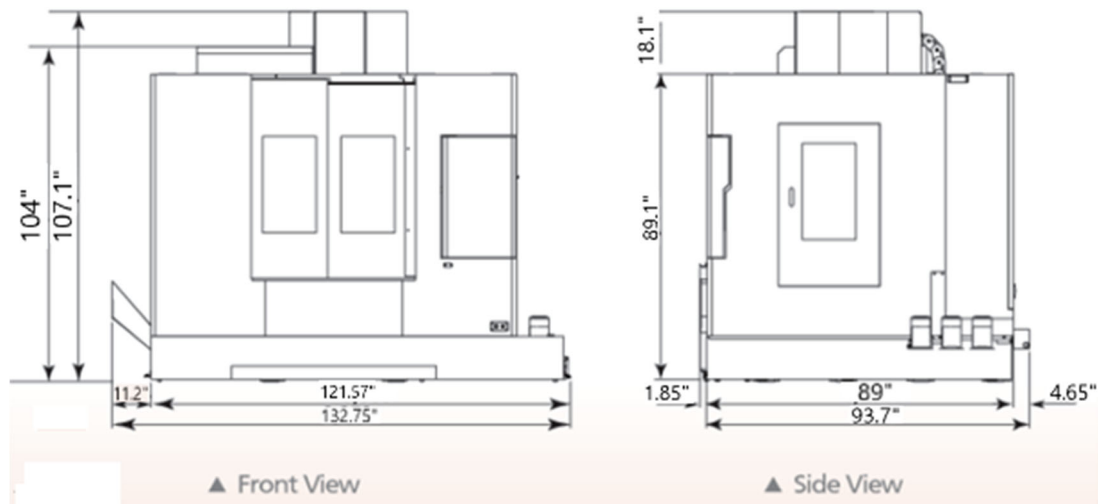
10249	Printed Manual Centroid control	\$88
10630	Unlimited part program size	\$550
10730	Intercon off-line conversational program (for your desktop PC)	\$99
10850	Coordinate system rotation (CSR)	\$220
10625	Scaling and mirroring [G50 & G51]	\$220
10810	Rigid tapping [G74 & G 84] (includes 10620)	\$550
10740	Engraving software	\$500
DIGITIZING & PROBING		
10405	DP-4 probing package w/ CSR (10850)	\$1,790
12486	DP-7 probing package w/ CSR (10850)	\$4,200
10770	2D & 3D digitizing software (requires 10405)	\$995
10220	TT-1; Tool touch off kit	\$725
12468	TT-2; Tool touch off kit	\$1,350
10772	Tool room package (10405 & 10220 & 10600 work coordinate)	\$2,439



Machines in Motion, Inc. 877 733-5500
Sales, Service, Control use training
Factory direct sales for all Atrump Products

CNC Machining Center: AL42

Floor Plan



Terms & conditions

F.O.B.: Pomona, CA 91768
 Delivery: Please check with Machines in Motion, Inc.

Standard Terms of Payment: 20% down-payment, balanced due before machine shipment.
 Taxes: Federal, State, Local Taxes are the responsibility of Purchaser.

Validity: This proposal is valid for 30 days.
 Training: Machines in Motion, Inc. includes one day of on-site service/training. Travel costs additional.

Warranty: One-year limited warranty for any defects in material or workmanship of machine tool and factory installed components.