

Machines in Motion, Inc. 877 733-5500
Sales, Service, Control use training
Factory direct sales for all Atrump Products

CNC Bed Mill : AV35

Starting at only \$37,800.00 FOB CA

Specification



Table Guard is optional

TABLE	10" x 54" (254mm x 1375mm)
X TRAVEL	35" (900mm)
Y TRAVEL	19.6" (500mm)
Z TRAVEL	22" (560mm)
SADDLE SIZE	24" (610mm)
QUILL TRAVEL	5" (127mm)
QUILL DIAMETER	3.93" (100mm)
SPINDLE NOSE TO TABLETOP	3.93" to 25.98" (100- 660mm)
SPINDLE CENTER TO COLUMN	21.5" (546mm)
TABLE LOAD CAPACITY	1,100 LBS (500KGS)
T-SLOT (3)	0.62" x 2.55"
SPINDLE TAPER	NT40
PROGRAMABLE SPINDLE SPEED	70 to 4500 rpm with Hi/Lo gears
TRANSMISSION SPINDLE-MOTOR	Timing belt
HEAD SWIVEL(RIGHT/LEFT)	90/90 degrees
RAPID FEED RATE	X/Y/Z: 300 ipm AC
CUTTING FEED RATE	1 to 120 IPM
SPINDLE MOTOR/MAX POWER	5HP
SERVO MOTORS ON XYZ	1 kW / 1 kW / 1 kW - AC
COOLANT PUMP	1/8 HP
LUBRICATION PUMP	Auto lubrication
SHIPPING DIMENSION	111.14" x 69.05" x 94.2"
NET WEIGHT	5000 LBS. (2200KGS)
POWER REQUIREMENT	10 KVA 3 phase 208V-230V
AIR REQUIREMENT	70-100 psi with power draw bar
OIL WAY RECOMMENDED	Mobil Vectra #2
OPTIONAL CHILLER OIL	Shell Tellus 32
COOLANT CAPACITY	7 Gallons

Featuring:

Atrump Machinery Proven High Quality Since 1989.

Centroid's Easy Conversational Programming

Huge 15" Color Touch Screen

60GB Reliable Solid-State Memory, RS232 and 2USB ports for easy data X-fer.

24" saddle supports worktable stability and rigid.

5HP Spindle Motor. 70-4500rpm with Hi/Low Gear

Quill Auto Feed

FC30 Meehanite casting with annealed & stress relieved for long term reliability.

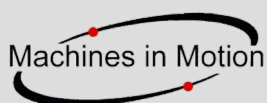
Box Way design on the Y and Z axes. All axes have hand scraped Turcite covered ways.

100% Laser tested and calibrated positioning accuracy and repeatability.

High speed Delta AC motors and Drivers and Spindle inverter.



**Promoting Centroid
Control since 1995**



Machines in Motion, Inc. 877 733-5500
Sales, Service, Control use training
Factory direct sales for all Atrump Products

CNC Bed Mill : AV35

Machine Standard

Auto lube system	Coolant system	Shop floor programming/Conversational
15" color LCD	60 GB solid state hard drive	Splash guard
USB 2.0 port	RS-232 interface	Leveling bolts & plate
Tools & box	LED work light	Electronic Operation Manual Centroid
Parts manual machine	Quill Auto Feed	

Machine Options

**Are Recommended items*

*PDB-MAX	Power Draw Bar-Maxi-Torque	\$830
*TG	Table Guard with 2 Lexan doors	\$700
*QS	Quill Scale installed	\$825
*EHDW-BE6S-IM	100 Step MPG – Operators hand control box	\$395
CP-MIST	Mist Coolant System	\$760
SG5	Single phase for 5HP Spindle system	\$900
RS8	Riser block 8"	\$895
RS10	Riser block 10"	\$1,040



100 Step MPG

Tools Options

NT40 KIT RECOMMEND

CK-101	52pcs Clamping Kit	\$130
NT40-TOOL6	NT40 Tool Holder set (6pcs.) 3/8, 1/2, 5/8, 3/4, 1" and keyless drill chuck	\$530
NT40ER40-10	NT40 ER40 Collect (10pcs.) 1/8, 1/4, 3/8, 1/2, 5/8, 3/4, 7/8, 1" + NT40 ER40 chuck*1 +Wrench	\$300
NT40ER40-17	NT40 ER40 Collect (17pcs.) 1/8, 3/16, 1/4, 5/16, 3/8, 1/2, 9/16, 5/8, 11/16, 3/4, 13/16, 7/8, 15/16, 1" + NT40 ER40 chuck*1+Wrench	\$450
WISE-6-TW	6" Angle Vise W/ Swivel Base	\$520



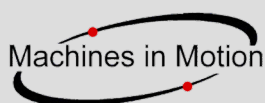
6" Angle Vise
(Made in Taiwan)



Power Draw Bar



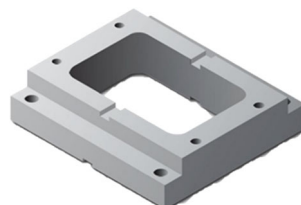
Table Guard with 2 Lexan doors



Machines in Motion, Inc. 877 733-5500
Sales, Service, Control use training
Factory direct sales for all Atrump Products

CNC Bed Mill : AV35

Optional Rotary Table

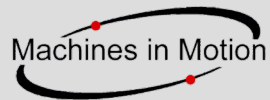


MNC-130R	CNC rotary table w/-Delta motor and driver 1KW. (Table size: 5.1")	\$7,800
DTS-130	Manual tailstock for MNC-130R	\$690
SK6 + AP1	3-Jaw manual scroll chuck w/-backplate	\$990
MNC-130RP	MNC130R 4th axis Rotary Table Package -MNC-130R+DTS-130+SK6+AP1	\$9,300
MNC-172R	CNC rotary table w/-Delta motor and driver 1KW. (Table size: 6.69")	\$8,400
DTS-171	Manual tailstock for MNC-171R	\$885
SK6 + AP1	3-Jaw manual scroll chuck w/-backplate	\$1,125
MNC-172RP	MNC170R 4th axis Rotary Table Package -MNC-172R+DTS-171+SK6+AP1	\$9,950
MNC-200R	CNC rotary table w/-Delta motor and driver 1KW. (Table size: 7.87")	\$8,800
DTS-200	Manual tailstock for MNC-200R	\$950
SK7 + AP1	3-Jaw manual scroll chuck w/-backplate	\$1,250
MNC-200RP	MNC200R 4th axis Rotary Table Package -MNC-200R+DTS-200+SK7+AP1	\$10,500

*A Riser Block is available for all rotary tables and tail stock packages.

CENTROID Software Options

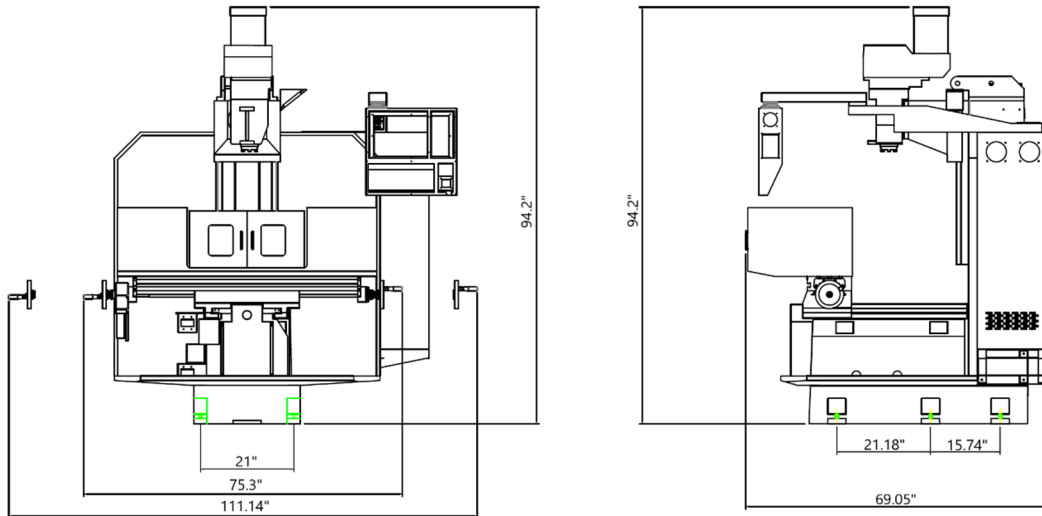
10249	Printed Manual Centroid control	\$88
10630	Unlimited part program size	\$550
10730	Intercon off-line conversational program (for your desktop PC)	\$99
10850	Coordinate system rotation (CSR)	\$220
10625	Scaling and mirroring [G50 & G51]	\$220
10814	DXF in, CAD Drawing Input software	\$305
10740	Engraving software	\$500
DIGITIZING & PROBING		
10405	DP-4 probing package w/ CSR (10850)	\$1,790
12486	DP-7 probing package w/ CSR (10850)	\$4,200
10770	2D & 3D digitizing software (requires 10405)	\$995
10220	TT-1; Tool touch off kit	\$725
12468	TT-2; Tool touch off kit	\$1,350
10772	Tool room package (10405 & 10220 & 10600 work coordinate)	\$2,439



Machines in Motion, Inc. 877 733-5500
Sales, Service, Control use training
Factory direct sales for all Atrump Products

CNC Bed Mill : AV35

Floor Plan



Terms & conditions

F.O.B.: Pomona, CA 91768
 Delivery: Please check with Machines in Motion, Inc.

Standard Terms of Payment: 20% down-payment, balanced due before machine shipment.
 Taxes: Federal, State, Local Taxes are the responsibility of Purchaser.

Validity: This proposal is valid for 30 days. Machines in Motion, Inc. includes one day of on-site service/training
 Training: \$850/Day plus travel expense

Warranty: One-year limited warranty for any defects in material or workmanship of machine tool and factory installed components.